









Wednesday 5th February, 2025



Welcome to Parent Information Night

 **REACH** for the sky

 Resilient  Engaged  Accepting  Collaborative  High Achieving



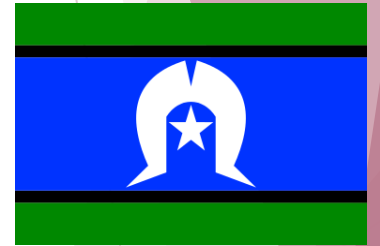
'Empowering curious and independent learners in an inclusive and future-focused environment'



Acknowledgement of Country

Mayfield State School acknowledges the traditional owners, the Yuggera and Turrbal Aboriginal people as the custodians of where we gather today, recognising their connection to land, waters and community.

We pay our respects to Australia's first peoples and to their elders past, present and emerging. May their strength and wisdom be with us today.



*Home of the
Yagara People*





Leadership Team

- Principal – Andrew Male
- Deputy Principal – Danielle Walters
- Head of Department: Curriculum – Selina Richards
- PRIDE Leaders – Belinda Darlington/Mel Elliott
- Business Manager – Sonia Welch



REACH for the sky



Resilient



Engaged



Accepting



Collaborative



High Achieving



'Empowering curious and independent learners in an inclusive and future-focused environment'



Staff Teams

- Year level teaching teams
- PRIDE Team
- Specialist Team
- Teacher Aide Team
- Office Team



REACH for the sky



Resilient



Engaged



Accepting



Collaborative



High Achieving



'Empowering curious and independent learners in an inclusive and future-focused environment'



MAYFIELD 'S'S PRIDE TEAM

Working with students, teachers and families to remove barriers to learning

P Pedagogy
R Relationships
I Inclusion
D Differentiation
E Engagement

Melissa Elliott



MON TUE WED THU FRI

Belinda Darlington



MON TUE WED THU FRI

Jake Eve



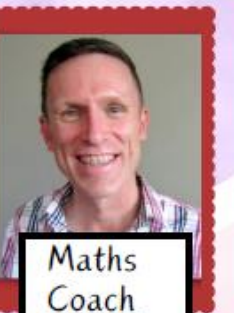
MON TUE WED THU

Lana Halabe



MON TUE WED THU

Greg Curran



WED THU

Tara Urquhart



WED

Donna Lipyeat



THU

Darija Kereama



TUE WED

Anne-Maree Hamilton



MON TUE

Buster



MON



REACH for the sky

'Empowering curious and independent learners in an inclusive and future-focused environment'





The P.R.I.D.E Team

'Provisioning for all learners'

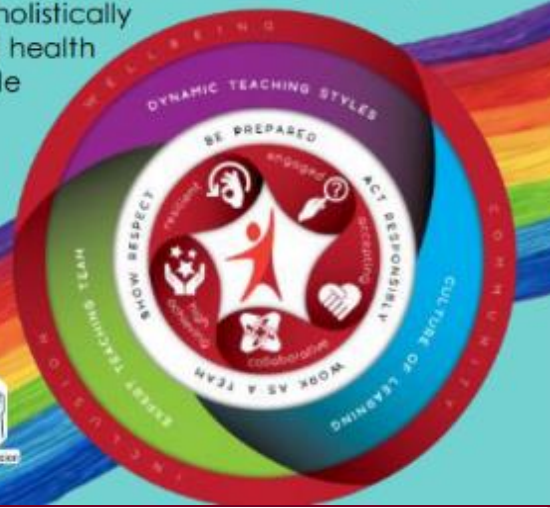


The PRIDE Team at MSS are committed to *building positive relationships* with the whole school community to *understand and actively support all students.*



We will do this by:

- Developing plans of learning through cycles of inquiry
- Working collaboratively through a co-teaching model to build teacher capability and enact high quality differentiation for all
- Responding to student data to differentiate with rigour
- Using age appropriate pedagogies
- Promoting inclusivity by respecting and valuing diversity
- Understanding students holistically
- Promoting good mental health and wellbeing of the whole school community



 **REACH** for the sky

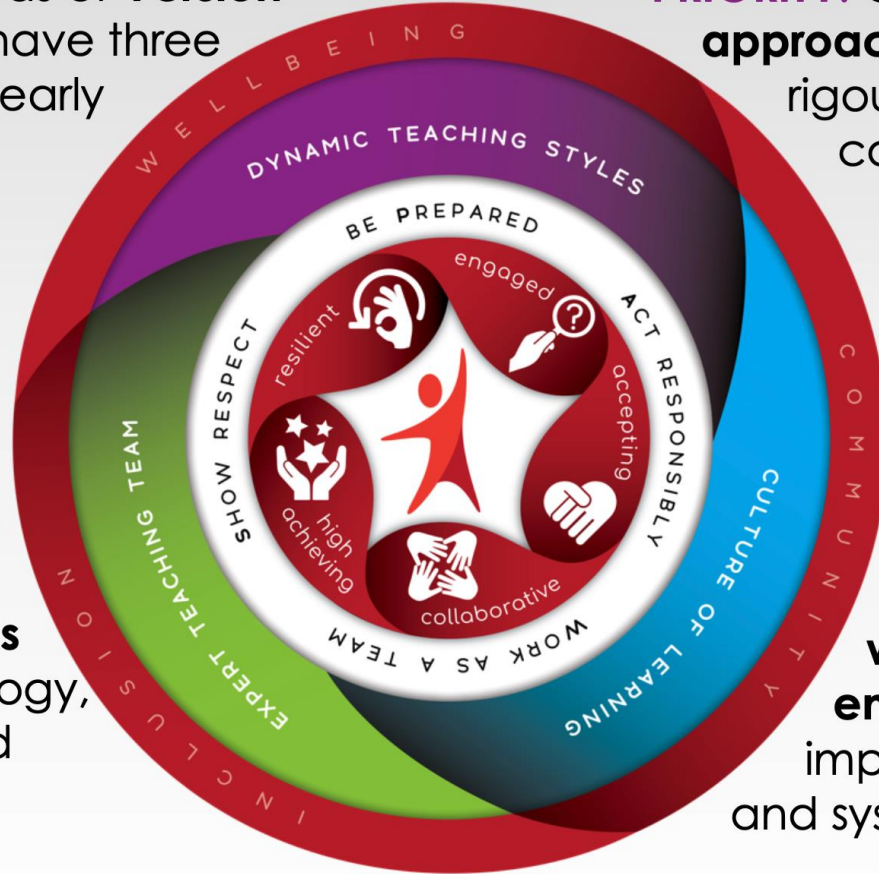
'Empowering curious and independent learners in an inclusive and future-focused environment'



School Strategic Plan 2025-2028

PRIORITY: All learning areas of **Version 9 Australian Curriculum** have three levels of planning with clearly aligned assessment implemented in all classrooms.

PRIORITY: Clear **pedagogical approaches** are implemented with rigour by all teachers and contextualised through specific learning areas.



PRIORITY: All staff engage in **regular collaborative professional conversations** about curriculum, pedagogy, assessment, reporting and differentiation.

PRIORITY: We all have a shared language and knowledge about **wellbeing and positive engagement** which is implemented in a consistent and systematic way.



REACH for the sky



Resilient



Engaged



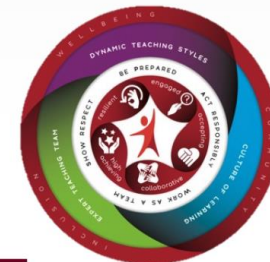
Accepting



Collaborative



High Achieving

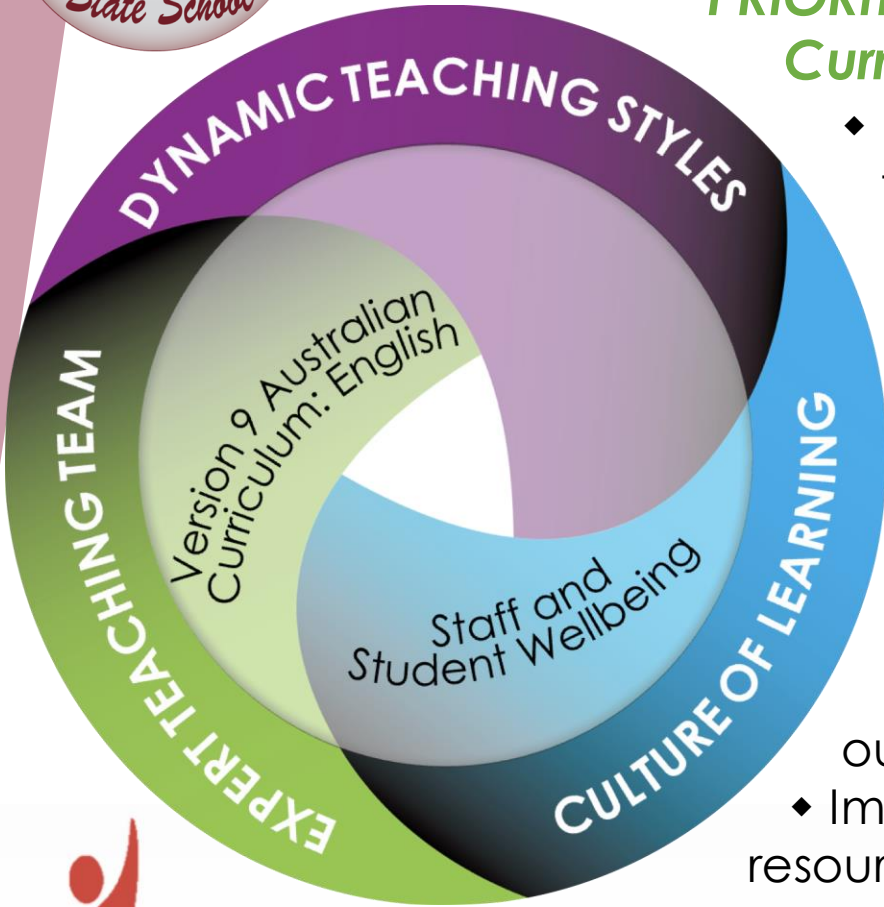


Empowering curious and independent learners in an inclusive and future-focused environment



2025 Explicit Improvement Agenda

PRIORITY 1 – Implement Version 9 Australian Curriculum: English



- ◆ Implement updated, research-based teaching of reading and writing through literacy blocks
- ◆ Align planning documentation with teaching of reading and writing
- ◆ Students know and understand their learning goals for next steps

PRIORITY 2 – Strengthen practices to support student and staff wellbeing

- ◆ Understanding how our brain works and our behaviour responses
- ◆ Implement whole school processes using resources to support self regulation and wellbeing



REACH for the sky



Resilient



Engaged



Accepting



Collaborative

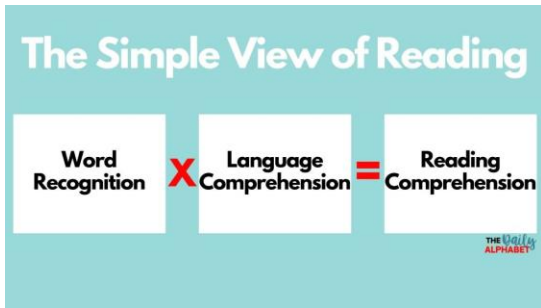


High Achieving



2025 Explicit Improvement Agenda

PRIORITY 1 – Implement Version 9 Australian Curriculum: English



- ❑ Version 9 Curriculum: English (All Schools)
- ❑ Common language for literacy blocks
- ❑ Whole school scope and sequence to support structured, synthetic phonics
- ❑ DRA for readers (online platform)
- ❑ Paired fluency reading instead of 'reading groups'
- ❑ Shared & dialogic reading to support language skills
- ❑ Parent information sessions to come (supporting reading & writing at home)



REACH for the sky



Resilient



Engaged



Accepting

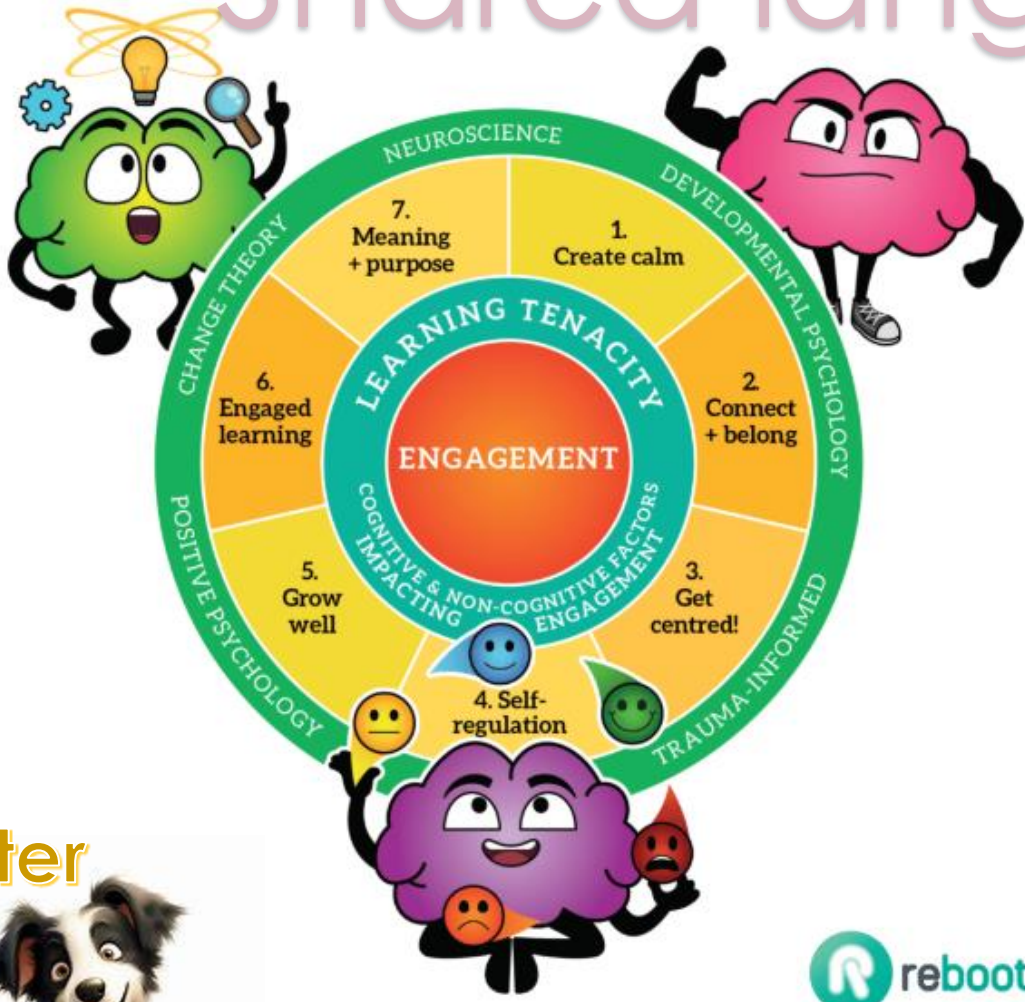


Collaborative

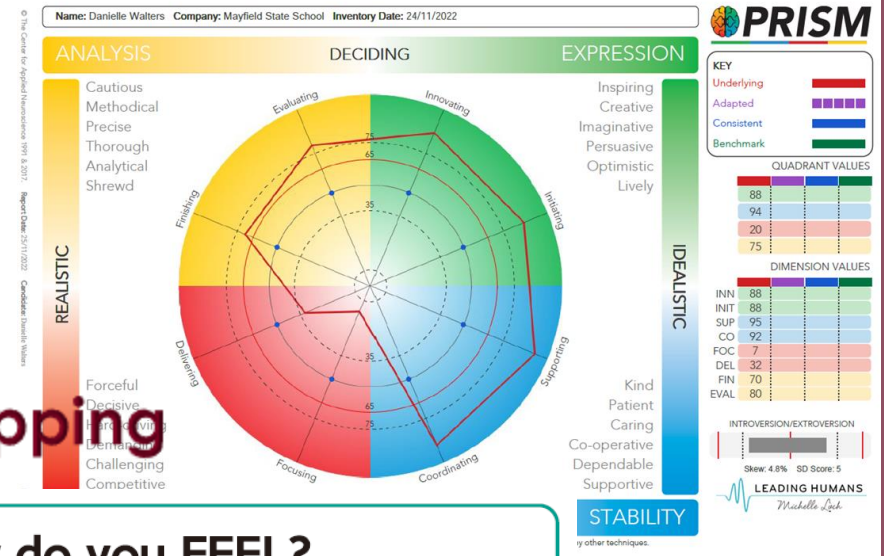


High Achieving

Shared language



Buster



Brain mapping

How do you FEEL?

1
Sad, angry, unhappy, mad, confused

2
Negative, frustrated, confused, sad, tired

3
Fine, OK, all right, tired, average

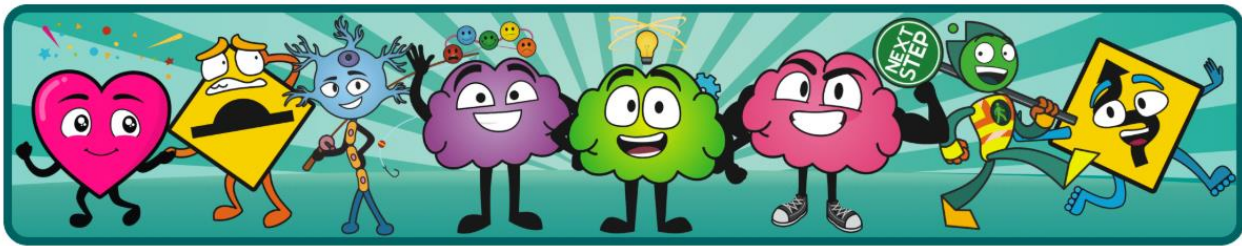
4
Comfortable, positive, pleased

5
Excited, happy, pumped

What do you need to be ready to learn?

Who or what could help me?

Supporting Wellbeing





Reminders...

Parent Volunteers

Signing in and EQ Mandatory training for all volunteers



Protecting our information



Working together



Protecting our students



Working safely



Working ethically



REACH for the sky



Resilient



Engaged



Accepting



Collaborative



High Achieving



'Empowering curious and independent learners in an inclusive and future-focused environment'

Communication...

School Newsletter



Emailed fortnightly

Facebook

The Facebook logo, consisting of the word "facebook" in white lowercase letters on a dark blue rectangular background.

Search Mayfield State School

School Website



www.mayfieldss.eq.edu.au

QParents App



App invite and 100 point ID

School Assemblies



Mondays at 2:30 in the Hall



Reminders...

Consent for activities

- Digital permission forms continue
- Future QParents update to include consent with payment options



REACH for the sky



Resilient



Engaged



Accepting



Collaborative



High Achieving



'Empowering curious and independent learners in an inclusive and future-focused environment'



QParents...



View and pay invoices

Access past report cards

View and update details (address, parent info, medical info) without visiting office

Student and sibling info all in one place

Absence notification

Requires 100 point ID and student EQID – email invite early this year



REACH for the sky



Resilient



Engaged



Accepting



Collaborative



High Achieving



‘Empowering curious and independent learners in an inclusive and future-focused environment’

Reminders...

Attendance at school

- **Early/Late:** will go through the office. If picking up early, students will be sent to the office for collection. *Parents do not go to classrooms to collect.*
- **Unexplained absences:** if these are not rectified by the end of each term, they will be converted to UNAUTHORISED absence
- **Morning Routine:** all students and parents are away from classrooms and verandas before the first bell. Students take their bags to the supervised areas



REACH for the sky



Resilient



Engaged



Accepting



Collaborative



High Achieving



'Empowering curious and independent learners in an inclusive and future-focused environment'

Reminders...

Student Resource Scheme

- Mathletics (Yr 1-6) - \$21.50
- Decodable Readers app (Prep – Yr 2) - \$9.85
- Instrumental Music (joined the program) - \$50

(If you choose not to participate, you will be required to purchase your own subscriptions)

Voluntary Payment

- \$60 a year to support additional learning experiences with extra expenses like STEM, ICT and Wellbeing initiatives



REACH for the sky



Resilient



Engaged



Accepting



Collaborative



High Achieving



'Empowering curious and independent learners in an inclusive and future-focused environment'



Contacting the Office

- Email: Admin@mayfieldss.eq.edu.au
- Phone: 3843 7333
- Absences – QParents app or phone line



REACH for the sky



Resilient



Engaged



Accepting



Collaborative



High Achieving



'Empowering curious and independent learners in an inclusive and future-focused environment'